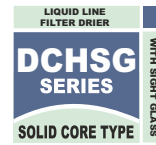


# LIQUID LINE FILTER DRIER DCHSG SERIES (WITH SIGHT GLASS)



## IMAGES & DRAWINGS



File No. SA33181



Filter Drier with SAE connection & Sight Glass

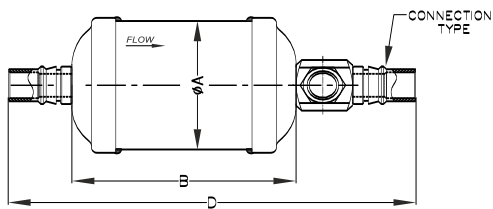


Filter Drier with ODF connection & Sight Glass

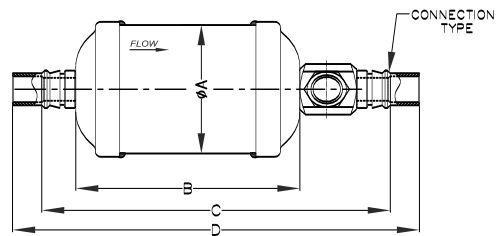


Internal View

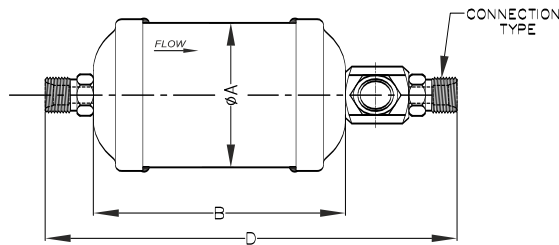
### DIMENSIONAL DATA



DRAWING - 1



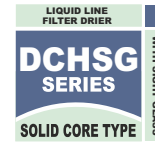
DRAWING - 2



DRAWING - 3

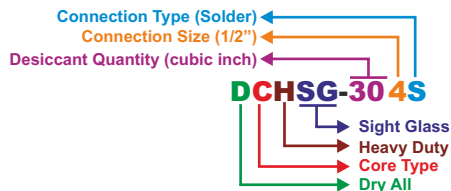
# LIQUID LINE FILTER DRIER DCHSG SERIES (WITH SIGHT GLASS)

## MODELS AVAILABLE



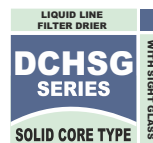
SR NO.	MODEL	CONNECTION TYPE (inch)	OUTER DIA ØA		BODY LENGTH B		STOPPER TO STOPPER LENGTH C		OVERALL LENGTH D		REFER DRAWING NO.		
			mm	inch	mm	inch	mm	inch	mm	inch			
1	DCHSG-052F	1/4" SAE	Ø63.5	Ø2.5	78	3.07	--	--	162	6.38	DRAWING - 1		
2	DCHSG-052S*	1/4" ODF					146	5.75	166	6.54	DRAWING - 2		
3	DCHSG-053F	3/8" SAE					--	--	170	6.69	DRAWING - 1		
4	DCHSG-053S*	3/8" ODF					146	5.75	166	6.54	DRAWING - 2		
5	DCHSG-082F	1/4" SAE			99	3.90	--	--	183	7.20	DRAWING - 1		
6	DCHSG-082S*	1/4" ODF					167	6.57	187	7.36	DRAWING - 2		
7	DCHSG-083F	3/8" SAE					--	--	191	7.52	DRAWING - 1		
8	DCHSG-083S*	3/8" ODF					167	6.57	187	7.36	DRAWING - 2		
9	DCHSG-084F	1/2" SAE					--	--	197	7.76	DRAWING - 1		
10	DCHSG-084S*	1/2" ODF					167	6.57	193	7.60	DRAWING - 2		
11	DCHSG-163F	3/8" SAE					122	4.80	--	--	214	8.43	DRAWING - 1
12	DCHSG-163S*	3/8" ODF							190	7.48	210	8.27	DRAWING - 2
13	DCHSG-164F	1/2" SAE							--	--	220	8.66	DRAWING - 1
14	DCHSG-164S*	1/2" ODF							190	7.48	216	8.50	DRAWING - 2
15	DCHSG-164-ORN	1/2" O-Ring	--	--	205	8.07			DRAWING - 3				
16	DCHSG-165F	5/8" SAE	--	--	228	8.98			DRAWING - 1				
17	DCHSG-165S*	5/8" ODF	190	7.48	220	8.66			DRAWING - 2				
18	DCHSG-303F	5/8" ODF	Ø76.2	Ø3	129	5.07			190	7.48	220	8.66	DRAWING - 3
19	DCHSG-303F	3/8" SAE			--	--	282	11.10	DRAWING - 1				
20	DCHSG-303S*	3/8" ODF			258	10.16	278	10.94	DRAWING - 2				
21	DCHSG-304F	1/2" SAE			--	--	288	11.34	DRAWING - 1				
22	DCHSG-304S*	1/2" ODF			258	10.16	284	11.18	DRAWING - 2				
23	DCHSG-305F	5/8" SAE			--	--	296	11.65	DRAWING - 1				
24	DCHSG-305S*	5/8" ODF			258	10.16	288	11.34	DRAWING - 2				
25	DCHSG-306F	3/4" SAE			--	--	302	12.13	DRAWING - 1				
26	DCHSG-306S*	3/4" ODF			258	10.16	296	11.65	DRAWING - 2				
27	DCHSG-307S*	7/8" ODF			260	10.24	304	11.97	DRAWING - 2				
28	DCHSG-309S*	1-1/8" ODF	260	10.24	314	12.36	DRAWING - 2						
29	DCHSG-414F	1/2" SAE	Ø88.9	Ø4	196	7.80	--	--	296	11.65	DRAWING - 1		
30	DCHSG-414S*	1/2" ODF					266	10.47	292	11.50	DRAWING - 2		
31	DCHSG-415F	5/8" SAE					--	--	304	11.97	DRAWING - 1		
32	DCHSG-415S*	5/8" ODF					266	10.47	296	11.65	DRAWING - 2		
33	DCHSG-417S*	7/8" ODF					268	10.55	312	12.28	DRAWING - 2		
34	DCHSG-419S*	1-1/8" ODF					268	10.55	322	12.66	DRAWING - 2		

- 1) Internal Assembly - Bead Type
- 2) Maximum Working Pressure - 45 bar ( 653 psig)
- 3) SAE, ORFS & 'O'Ring Type Connection are in Steel, Nickel Plated
- 4) ODF Type Connection is in Steel & Nickel Plated
- 5) \*Mark Connection Steel Plated



# LIQUID LINE FILTER DRIER DCHSG SERIES (WITH SIGHT GLASS)

## SELECTION RECCOMENDATION



SR NO.	Description	Connections Type	Flow Capacity Ton @ 1psi ΔP (for kw multiply Ton by 3.5 )				Water Capacity drops of water									
			R-134a	R-22 & R-410A	R-407C	R-404A & R-507	R-134a		R-22		R-407C		R-410A		R-404A & R-507	
							75°F	125°F	75°F	125°F	75°F	125°F	75°F	125°F	75°F	125°F
1	DCHSG - 052F	1/4" SAE	2	2.28	2.28	1.42	201	186	186	136	156	126	131	101	206	196
2	DCHSG - 052S	1/4" ODF														
3	DCHSG - 053F	3/8" SAE	5.14	5.42	5.42	4										
4	DCHSG - 053S	3/8" ODF														
5	DCHSG - 082F	1/4" SAE	2	2.28	2.28	1.42										
6	DCHSG - 082S	1/4" ODF														
7	DCHSG - 083F	3/8" SAE	5.42	6	6	4	265	245	250	225	205	165	170	130	275	260
8	DCHSG - 083S	3/8" ODF														
9	DCHSG - 084F	1/2" SAE	7.42	8.28	8.28	5.71										
10	DCHSG - 084S	1/2" ODF														
11	DCHSG - 163F	3/8" SAE	6.2	6.8	6.8	4.57										
12	DCHSG - 163S	3/8" ODF														
13	DCHSG - 164F	1/2" SAE	8.5	9.4	9.4	6.2	396	366	271	336	306	246	256	196	406	286
14	DCHSG - 164S	1/2" ODF														
15	DCHSG - 164-ORN	13/16-16ORFS	12.2	13.4	13.4	8.57										
16	DCHSG - 165F	5/8" SAE														
17	DCHSG - 165S	5/8" ODF	9.6	10.5	10.5	7.4	490	463	360	342	400	364	350	314	672	364
18	DCHLDGSL - 163R	11/16-16 ORFS														
19	DCHSG - 303F	3/8" SAE	6	6.57	6.57	4.28										
20	DCHSG - 303S	3/8" ODF														
21	DCHSG - 304F	1/2" SAE	8.85	9.71	9.71	6.28										
22	DCHSG - 304S	1/2" ODF														
23	DCHSG - 305F	5/8" SAE	12.85	14	14	9.42	877	812	822	752	687	552	567	432	907	857
24	DCHSG - 305S	5/8" ODF														
25	DCHSG - 306F	3/4" SAE	17.71	19.42	19.42	12.85										
26	DCHSG - 306S	3/4" ODF														
27	DCHSG - 307S*	7/8" ODF	17.71	19.42	19.42	12.85										
28	DCHSG - 309S*	1-1/8" ODF														
29	DCHSG - 414F	1/2" SAE	9.14	10	10	6.57										
30	DCHSG - 414S	1/2" ODF														
31	DCHSG - 415F	5/8" SAE	15.14	16.57	16.57	10.57	1216	1106	1146	1016	951	746	786	586	1266	1162
32	DCHSG - 415S	5/8" ODF														
33	DCHSG-417S*	7/8" ODF	26	28.57	28.57	18.57										
34	DCHSG-419*	1-1/8" ODF														

All ratings are in accordance with ANSI/AHRI Standard 710-2009

1. Water in refrigerant at EPD for :

R-134a/R-407C/R-410A/R-404A/R-507A is 50 ppm,  
R-22 is 60 ppm.

2. Flow Capacities are based on following standard rating

Flow Rate per Ton of Refrigeration at 86°F Liquid & 5.0°F Saturated Vapor for :

R-134a is 3.1 lb/min/ton,

R-407C is 3.0 lb/min/ton,

R-410A is 2.8 lb/min/ton,

R-404A is 4.1 lb/min/ton,

R-507A is 4.2 lb/min/ton,

R-22 is 3.0 lb/min/ton.